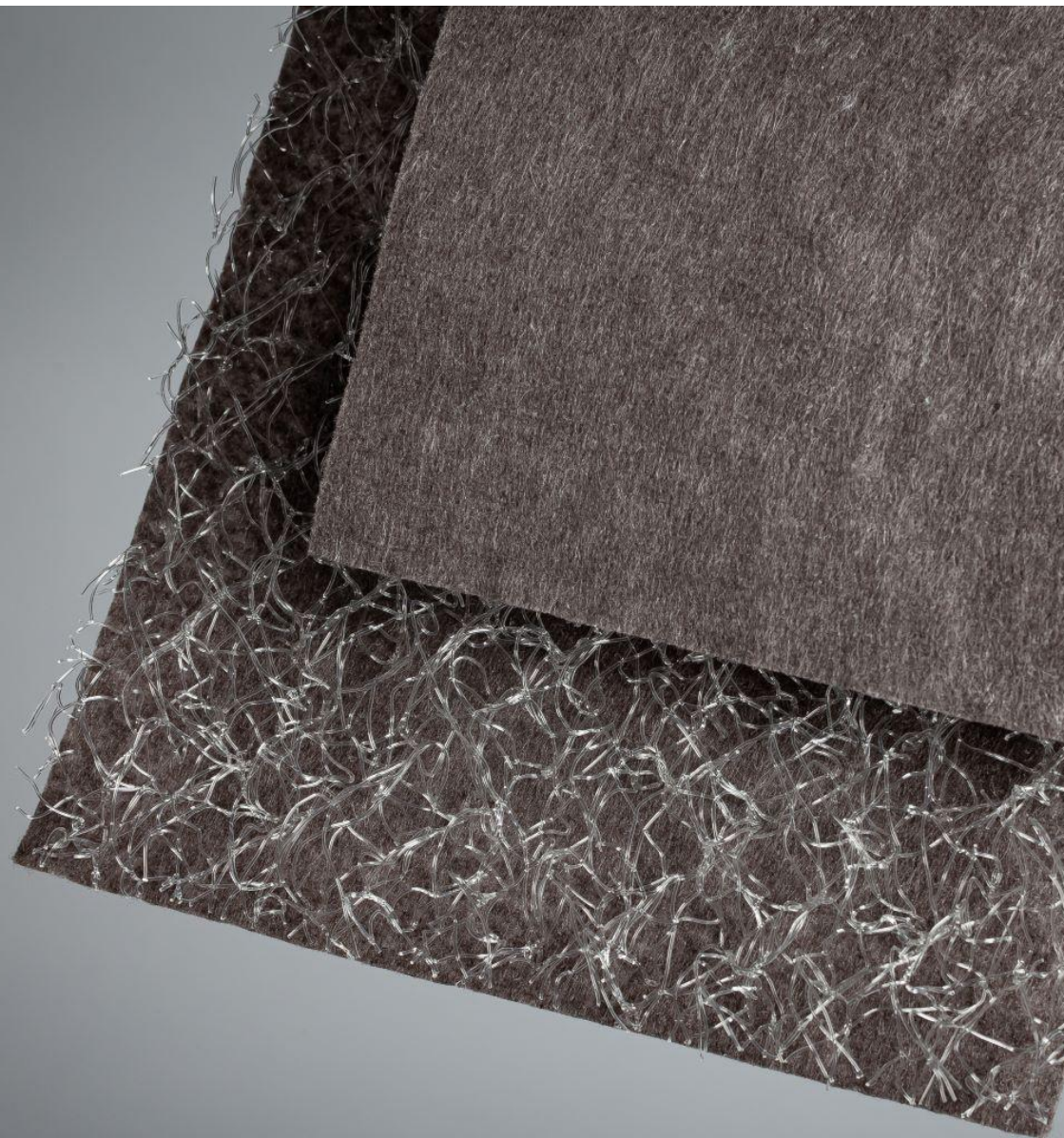


Environmental Product Declaration (EPD)
According to ISO 14025 and EN 15804



Enka® Biocarrier

Registration number:	EPD-Kiwa-EE-172540-en
Issue date:	18-11-2024
Valid until:	18-11-2029
Declaration owner:	Freudenberg Performance Materials B.V.
Publisher:	Kiwa-Ecobility Experts
Programme operator:	Kiwa-Ecobility Experts
Status:	verified



1 General information

1.1 PRODUCT

Enka® Biocarrier

1.2 REGISTRATION NUMBER

EPD-Kiwa-EE-172540-en

1.3 VALIDITY

Issue date: 18-11-2024

Valid until: 18-11-2029

1.4 PROGRAMME OPERATOR

Kiwa-Ecobility Experts
Wattstraße 11-13
13355 Berlin
DE



Raoul Mancke

(Head of programme operations, Kiwa-Ecobility Experts)



Dr. Ronny Stadie

(Verification body, Kiwa-Ecobility Experts)

1.5 OWNER OF THE DECLARATION

Manufacturer: Freudenberg Performance Materials B.V.

Address: Westervoortsedijk 73, 6827 AV Arnhem, Netherlands

E-mail: info@freudenberg-pm.com

Website: <https://www.freudenberg-pm.com/en>

Production location: Glanzstoffstrasse 1

Address production location: Glanzstoffstrasse 1, 63906 Obernburg, Germany

1.6 VERIFICATION OF THE DECLARATION

The independent verification is in accordance with the ISO 14025:2011. The LCA is in compliance with ISO 14040:2006 and ISO 14044:2006. The EN 15804:2012+A2:2019 serves as the core PCR.

Internal External



Lucas Pedro Berman, Senda

1.7 STATEMENTS

The owner of this EPD shall be liable for the underlying information and evidence. The programme operator Kiwa-Ecobility Experts shall not be liable with respect to manufacturer data, life cycle assessment data and evidence.

1.8 PRODUCT CATEGORY RULES

Kiwa-Ecobility Experts (Kiwa-EE) – General Product Category Rules (2022-02-14)

Kiwa-Ecobility Experts (Kiwa-EE) – Specific Product Category Rules: Geosynthetic products (2023-07-21)

1.9 COMPARABILITY

In principle, a comparison or assessment of the environmental impacts of different products is only possible if they have been prepared in accordance with EN 15804+A2. For the evaluation of the comparability, the following aspects have to be considered in particular: PCR used, functional or declared unit, geographical reference, the definition of

1 General information

the system boundary, declared modules, data selection (primary or secondary data, background database, data quality), scenarios used for use and disposal phases, and the life cycle inventory (data collection, calculation methods, allocations, validity period). PCRs and general program instructions of different EPD program operators may differ. Comparability needs to be evaluated. For further guidance, see EN 15804+A2 (5.3 Comparability of EPD for construction products) and ISO 14025 (6.7.2 Requirements for comparability).

1.10 CALCULATION BASIS

LCA method R<THINK: Ecobility Experts | EN15804+A2

LCA software*: Simapro 9.1

Characterization method: EN 15804 +A2 Method v1.0

LCA database profiles: EcolInvent version 3.6

Version database: v3.17 (2024-05-22)

** Simapro is used for calculating the characterized results of the Environmental profiles within R<THINK.*

1.11 LCA BACKGROUND REPORT

This EPD is generated on the basis of the LCA background report 'Enka® Biocarrier ' with the calculation identifier ReTHiNK-72540.

2 Product

2.1 PRODUCT DESCRIPTION

Enka Solutions Biocarriers are biobased mats consisting of two components: a lightweight, flexible and open three-dimensional matting made of entangled monofilaments on the top surface, and a nonwoven filter fabric underneath. Both components are firmly connected. Enka Biocarrier products are delivered in easy-to-handle 1m wide rolls.

The composition of the product

Materials	Weight %
PLA	>99%
Ancillary items	<1%

2.2 APPLICATION (INTENDED USE OF THE PRODUCT)

The Enka® Biocarrier range is used to create pre-vegetated mats or for erosion prevention by reinforcing root structures. Applications include green roofs, tram ways, landscaping, dikes or slopes. The thickness of the mat guarantees a minimal substrate thickness and minimal waste when harvesting and installing pre-vegetated mats. The vegetation roots penetrate the geotextile, allowing for a full-grown and rooted mat that functions like an integrated blanket. The geotextile ensures the soil stays separated from the underlying structure.

2.3 REFERENCE SERVICE LIFE

RSL PRODUCT

The reference service life in years is determined by climate, location, substrate and vegetation used at both the nursery and the eventual installation location.

As the service life of product is not taken into account, there is no need to specify a reference service life.

USED RSL (YR) IN THIS LCA CALCULATION:

100

2.4 TECHNICAL DATA

The technical data for the Enka® Biocarrier product range are listed below. The unit weight varies per product type depending on the thickness.

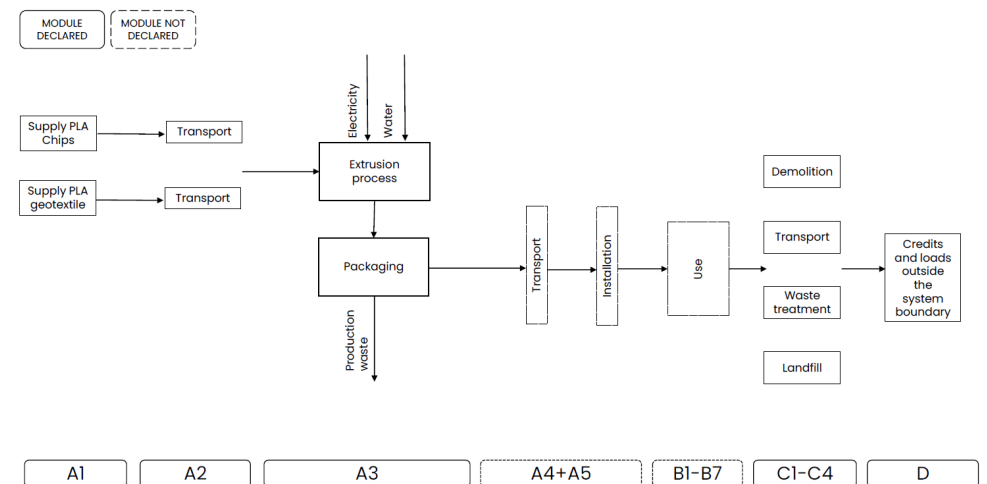
Characteristics	Standard	Value	Unit
Unit weight	EN ISO 9864	400 - 440	g/m2
Thickness (2kPa)	EN 9863-1	8 - 15	mm

2.5 SUBSTANCES OF VERY HIGH CONCERN

The articles Freudenberg Performance Materials supplies do not contain Substances Of very High Concern, according to the Candidate list EChA Article 59 (1) of Regulation (EC) Nr. 1907/2006, with a concentration > 0,1 % w/w (last update on January 23rd, 2023).

2.6 DESCRIPTION PRODUCTION PROCESS

The Biocarrier product range consists solely of a biobased 3D structured mat with a biobased geotextile on one side of the product. The biobased structure is produced at Freudenberg's Obernburg am Main site using a monofilament extrusion process. The biopolymer chips are produced in the United States and shipped in containers by sea freight. The biobased geotextile is sourced in Belgium. After connecting the 3D mat and the geotextile at the Obernburg am Main site, the rolls are placed in black polyethylene foil sacks for protection. The final roll length can be between 50 and 100m, depending on the customer's requirements or optimal truck loading.



3 Calculation rules

3.1 DECLARED UNIT

m²

The declared unit is one square meter of Enka®Biocarrier.

Reference unit: square meter (m2)

3.2 CONVERSION FACTORS

Description	Value	Unit
Reference unit	1	m2
Weight per reference unit	0.440	kg
Conversion factor to 1 kg	2.272727	m2

3.3 SCOPE OF DECLARATION AND SYSTEM BOUNDARIES

This is a Cradle to gate with modules C1-C4 and module D EPD. The life cycle stages included are as shown below:

(X = module included, ND = module not declared)

A1	A2	A3	A4	A5	B1	B2	B3	B4	B5	B6	B7	C1	C2	C3	C4	D
X	X	X	ND	ND	ND	ND	ND	ND	ND	ND	ND	X	X	X	X	X

The modules of the EN15804 contain the following:

Module A1 = Raw material supply	Module B5 = Refurbishment
Module A2 = Transport	Module B6 = Operational energy use
Module A3 = Manufacturing	Module B7 = Operational water use
Module A4 = Transport	Module C1 = De-construction / Demolition
Module A5 = Construction - Installation process	Module C2 = Transport
Module B1 = Use	Module C3 = Waste Processing
Module B2 = Maintenance	Module C4 = Disposal
Module B3 = Repair	Module D = Benefits and loads beyond the product system boundaries
Module B4 = Replacement	

3.4 REPRESENTATIVENESS

The EPD represents Enka® Biocarrier 15 with a unit weight of 440 g/m² and also covers Enka® Biocarrier 8 with a unit weight of 400 g/m².

The input data are representative for Enka®Biocarrier, a product of Freudenberg Performance Materials B.V. The data are representative for the European Union.

The considered scenarios are currently in use and are representative of one of the most likely scenario alternatives.

3 Calculation rules

3.5 CUT-OFF CRITERIA

Product stage (Modules A1-A3)

All input flows and output flows are considered in this LCA. The total neglected input flows do therefore not exceed the limit of 5% of energy use and mass.

The following processes are excluded:

- Manufacturing of equipment used in production, buildings or any other capital asset
- Transportation of personnel to the plant
- The transportation of personnel within the plant
- Research and development activities
- Long-term emissions

End of life stage (Modules C1-C4)

All input flows (e.g. energy use for demolition or disassembly, transport to waste processing, etc.) and output flows (e.g. end-of-life waste processing of the product, etc.) are considered in this LCA. The total neglected input flows do therefore not exceed the limit of 5% of energy use and mass.

Benefits and loads beyond the system boundary (Module D)

All benefits and loads beyond the system boundary resulting from reusable products, recyclable materials and/or useful energy carriers leaving the product system are considered in this LCA.

3.6 ALLOCATION

Allocations were avoided as far as possible. There are no coproducts or by-product in the manufacturing of the examined product. Based on energy consumption measurements, the energy requirements of the production were allocated to the individual products. Specific information about allocations within the background data is included in the documentation of the Ecoinvent datasets.

3.7 DATA COLLECTION & REFERENCE PERIOD

All process-specific data were collected for the operating year 2022.

3.8 ESTIMATES AND ASSUMPTIONS

All datasets chosen for the LCA refer to Europe as the geographic reference.

A dataset for a non-specific truck was used for module A2.

For the demolition (module C1), it is assumed that 0,001 liter diesel is used.

For the end-of-life, waste scenarios from the Dutch Environmental Database (Nationale Milieudatabase (NMD)) were used.

3.9 DATA QUALITY

To ensure the comparability of the results, only consistent background data from the Ecoinvent data-base version 3.6 (2019) was used in the LCA (e.g. data sets on energy, transports, auxiliary and operating materials). The database is regularly checked and thus complies with the requirements of EN 15804 (background data not older than 10 years). Almost all consistent data sets contained in the Ecoinvent database version 3.6 are documented and can be viewed in the online documentation. The raw material data were converted into reference flows (input per declared unit). The general rule was followed that specific data from specific production processes or average data derived from specific processes must have priority in the calculation of an LCA. Data for processes over which the manufacturer has no influence were assigned generic data.

The LCA calculation was carried out using Nibe's LCA & EPD tool R<THiNK.

3.10 POWER MIX

A market-based approach was used based on the Guarantees of Origin received from Freudenberg.

The emission factor of the electricity mix is 0,099 kg CO₂e/kWh.

4 Scenarios and additional technical information

4.1 DE-CONSTRUCTION, DEMOLITION (C1)

The following information describes the scenario for demolition at end of life.

Description	Amount	Unit
Diesel, burned in machine (incl. emissions)	0.001	l

4.2 TRANSPORT END-OF-LIFE (C2)

The following distances and transport conveyance are assumed for transportation during end of life for the different types of waste processing.

Waste Scenario	Transport conveyance	Not removed (stays in work) [km]	Landfill [km]	Incineration [km]	Recycling [km]	Re-use [km]
Industrial composting	Lorry (Truck), unspecified (default) market group for (GLO)	0	100	150	50	0

The transport conveyance(s) used in the scenario(s) for transport during end of life has the following characteristics.

	Value and unit
Vehicle type used for transport	Lorry (Truck), unspecified (default) market group for (GLO)
Fuel type and consumption of vehicle	not available
Capacity utilisation (including empty returns)	50 % (loaded up and return empty)
Bulk density of transported products	inapplicable
Volume capacity utilisation factor	1

4.3 END OF LIFE (C3, C4)

The scenario(s) assumed for end of life of the product are given in the following tables. First the assumed percentages per type of waste processing are displayed, followed by the assumed amounts.

Waste Scenario	Region	Not removed (stays in work) [%]	Landfill [%]	Incineration [%]	Recycling [%]	Re-use [%]
Industrial composting	DE	0	0	0	100	0

4 Scenarios and additional technical information

Waste Scenario	Not removed (stays in work) [kg]	Landfill [kg]	Incineration [kg]	Recycling [kg]	Re-use [kg]
Industrial composting	0.000	0.000	0.000	0.440	0.000
Total	0.000	0.000	0.000	0.440	0.000

4.4 BENEFITS AND LOADS BEYOND THE SYSTEM BOUNDARY (D)

The presented Benefits and loads beyond the system boundary in this EPD are based on the following calculated Net output flows in kilograms and Energy recovery displayed in MJ Lower Heating Value.

Waste Scenario	Net output flow [kg]	Energy recovery [MJ]
Industrial composting	0.440	0.000
Total	0.440	0.000

5 Results

For the impact assessment, the characterization factors of the LCIA method EN 15804 +A2 Method v1.0 are used. Long-term emissions (>100 years) are not considered in the impact assessment. The results of the impact assessment are only relative statements that do not make any statements about end-points of the impact categories, exceedance of threshold values, safety margins or risks. The following tables show the results of the indicators of the impact assessment, of the use of resources as well as of waste and other output flows.

5.1 ENVIRONMENTAL IMPACT INDICATORS PER SQUARE METER

CORE ENVIRONMENTAL IMPACT INDICATORS EN15804+A2

Abbr.	Unit	A1	A2	A3	A1-A3	C1	C2	C3	C4	D
AP	mol H+ eqv.	9.43E-3	8.22E-4	1.28E-3	1.15E-2	3.43E-5	1.72E-5	9.64E-4	0.00E+0	-8.76E-6
GWP-total	kg CO2 eqv.	4.04E-1	4.40E-2	1.77E-1	6.25E-1	3.28E-3	2.97E-3	1.22E-1	0.00E+0	-1.38E-3
GWP-b	kg CO2 eqv.	-9.67E-1	4.09E-6	-4.82E-2	-1.02E+0	9.12E-7	1.37E-6	1.12E-1	0.00E+0	-1.00E-6
GWP-f	kg CO2 eqv.	1.36E+0	4.40E-2	2.24E-1	1.63E+0	3.28E-3	2.97E-3	9.93E-3	0.00E+0	-1.38E-3
GWP-luluc	kg CO2 eqv.	1.02E-2	2.30E-5	7.78E-4	1.10E-2	2.58E-7	1.09E-6	3.45E-6	0.00E+0	-7.39E-7
EP-m	kg N eqv.	3.18E-3	2.16E-4	2.95E-4	3.69E-3	1.51E-5	6.07E-6	3.96E-5	0.00E+0	-3.16E-6
EP-fw	kg P eq	1.71E-4	3.17E-7	1.49E-5	1.86E-4	1.19E-8	3.00E-8	2.37E-7	0.00E+0	-1.80E-8
EP-T	mol N eqv.	2.87E-2	2.40E-3	3.14E-3	3.42E-2	1.66E-4	6.69E-5	4.26E-3	0.00E+0	-3.48E-5
ODP	kg CFC 11 eqv.	1.04E-7	9.28E-9	1.09E-8	1.24E-7	7.08E-10	6.55E-10	1.56E-9	0.00E+0	-2.87E-10
POCP	kg NMVOC eqv.	5.02E-3	6.35E-4	7.26E-4	6.38E-3	4.57E-5	1.91E-5	3.66E-5	0.00E+0	-9.82E-6
ADP-f	MJ	1.65E+1	6.15E-1	3.64E+0	2.07E+1	4.51E-2	4.48E-2	1.27E-1	0.00E+0	-2.03E-2
ADP-mm	kg Sb-eqv.	2.04E-5	7.35E-7	3.50E-6	2.47E-5	5.03E-9	7.52E-8	1.12E-7	0.00E+0	-3.09E-8
WDP	m3 world eqv.	1.91E+0	1.62E-3	7.78E-1	2.69E+0	6.05E-5	1.60E-4	5.74E-4	0.00E+0	-8.68E-5

AP=Acidification (AP) | **GWP-total**=Global warming potential (GWP-total) | **GWP-b**=Global warming potential - Biogenic (GWP-b) | **GWP-f**=Global warming potential - Fossil (GWP-f) | **GWP-luluc**=Global warming potential - Land use and land use change (GWP-luluc) | **EP-m**=Eutrophication marine (EP-m) | **EP-fw**=Eutrophication, freshwater (EP-fw) | **EP-T**=Eutrophication, terrestrial (EP-T) | **ODP**=Ozone depletion (ODP) | **POCP**=Photochemical ozone formation - human health (POCP) | **ADP-f**=Resource use, fossils (ADP-f) | **ADP-mm**=Resource use, minerals and metals (ADP-mm) | **WDP**=Water use (WDP)

5 Results

ADDITIONAL ENVIRONMENTAL IMPACT INDICATORS EN15804+A2

Abbr.	Unit	A1	A2	A3	A1- A3	C1	C2	C3	C4	D
ETP-fw	CTUe	4.73E+1	4.81E-1	3.87E+0	5.16E+1	2.72E-2	3.99E-2	3.76E+0	0.00E+0	-1.92E-2
PM	disease incidence	6.63E-8	2.70E-9	8.33E-9	7.74E-8	9.09E-10	2.67E-10	4.90E-9	0.00E+0	-1.23E-10
HTP-c	CTUh	8.52E-10	2.20E-11	9.50E-11	9.69E-10	9.50E-13	1.30E-12	1.13E-11	0.00E+0	-7.18E-13
HTP-nc	CTUh	2.70E-8	4.75E-10	3.26E-9	3.07E-8	2.34E-11	4.37E-11	1.98E-10	0.00E+0	-2.08E-11
IR	kBq U235 eqv.	4.81E-2	2.60E-3	8.05E-3	5.87E-2	1.93E-4	1.88E-4	9.46E-4	0.00E+0	-8.64E-5
SQP	Pt	1.50E+1	3.34E-1	2.56E+0	1.79E+1	5.76E-3	3.88E-2	2.02E-1	0.00E+0	-1.72E-2

ETP-fw=Ecotoxicity, freshwater (ETP-fw) | **PM**=Particulate Matter (PM) | **HTP-c**=Human toxicity, cancer (HTP-c) | **HTP-nc**=Human toxicity, non-cancer (HTP-nc) | **IR**=Ionising radiation, human health (IR) | **SQP**=Land use (SQP)

CLASSIFICATION OF DISCLAIMERS TO THE DECLARATION OF CORE AND ADDITIONAL ENVIRONMENTAL IMPACT INDICATORS

ILCD classification	Indicator	Disclaimer
ILCD type / level 1	Global warming potential (GWP)	None
	Depletion potential of the stratospheric ozone layer (ODP)	None
	Potential incidence of disease due to PM emissions (PM)	None
	Acidification potential, Accumulated Exceedance (AP)	None
	Eutrophication potential, Fraction of nutrients reaching freshwater end compartment (EP-freshwater)	None
ILCD type / level 2	Eutrophication potential, Fraction of nutrients reaching marine end compartment (EP-marine)	None
	Eutrophication potential, Accumulated Exceedance (EP-terrestrial)	None
	Formation potential of tropospheric ozone (POCP)	None
	Potential Human exposure efficiency relative to U235 (IRP)	1
ILCD type / level 3	Abiotic depletion potential for non-fossil resources (ADP-minerals&metals)	2
	Abiotic depletion potential for fossil resources (ADP-fossil)	2
	Water (user) deprivation potential, deprivation-weighted water consumption (WDP)	2
	Potential Comparative Toxic Unit for ecosystems (ETP-fw)	2

5 Results

ILCD classification	Indicator	Disclaimer
	Potential Comparative Toxic Unit for humans (HTP-c)	2
	Potential Comparative Toxic Unit for humans (HTP-nc)	2
	Potential Soil quality index (SQP)	2

Disclaimer 1 – This impact category deals mainly with the eventual impact of low dose ionizing radiation on human health of the nuclear fuel cycle. It does not consider effects due to possible nuclear accidents, occupational exposure nor due to radioactive waste disposal in underground facilities. Potential ionizing radiation from the soil, from radon and from some construction materials is also not measured by this indicator.

Disclaimer 2 – The results of this environmental impact indicator shall be used with care as the uncertainties on these results are high or as there is limited experienced with the indicator.

5.2 INDICATORS DESCRIBING RESOURCE USE AND ENVIRONMENTAL INFORMATION BASED ON LIFE CYCLE INVENTORY (LCI)

PARAMETERS DESCRIBING RESOURCE USE

Abbr.	Unit	A1	A2	A3	A1- A3	C1	C2	C3	C4	D
PERE	MJ	1.19E+1	6.13E-3	1.10E+0	1.30E+1	2.44E-4	5.61E-4	3.85E-2	0.00E+0	-3.96E-4
PERM	MJ	0.00E+0	0.00E+0	0.00E+0	0.00E+0	0.00E+0	0.00E+0	0.00E+0	0.00E+0	0.00E+0
PERT	MJ	1.19E+1	6.13E-3	1.10E+0	1.30E+1	2.44E-4	5.61E-4	3.85E-2	0.00E+0	-3.96E-4
PENRE	MJ	1.78E+1	6.53E-1	3.30E+0	2.17E+1	4.79E-2	4.75E-2	1.34E-1	0.00E+0	-2.16E-2
PENRM	MJ	0.00E+0	0.00E+0	5.63E-1	5.63E-1	0.00E+0	0.00E+0	0.00E+0	0.00E+0	0.00E+0
PENRT	MJ	1.78E+1	6.53E-1	3.86E+0	2.23E+1	4.79E-2	4.75E-2	1.34E-1	0.00E+0	-2.16E-2
SM	Kg	0.00E+0	0.00E+0	2.60E-4	2.60E-4	0.00E+0	0.00E+0	0.00E+0	0.00E+0	0.00E+0
RSF	MJ	0.00E+0	0.00E+0	0.00E+0	0.00E+0	0.00E+0	0.00E+0	0.00E+0	0.00E+0	0.00E+0
NRSF	MJ	0.00E+0	0.00E+0	0.00E+0	0.00E+0	0.00E+0	0.00E+0	0.00E+0	0.00E+0	0.00E+0
FW	M3	5.62E-2	5.60E-5	1.95E-2	7.57E-2	2.32E-6	5.45E-6	2.51E-5	0.00E+0	-3.33E-6

PERE=renewable primary energy ex. raw materials | **PERM**=renewable primary energy used as raw materials | **PERT**=renewable primary energy total | **PENRE**=non-renewable primary energy ex. raw materials | **PENRM**=non-renewable primary energy used as raw materials | **PENRT**=non-renewable primary energy total | **SM**=use of secondary material | **RSF**=use of renewable secondary fuels | **NRSF**=use of non-renewable secondary fuels | **FW**=use of net fresh water

5 Results

OTHER ENVIRONMENTAL INFORMATION DESCRIBING WASTE CATEGORIES

Abbr.	Unit	A1	A2	A3	A1-A3	C1	C2	C3	C4	D
HWD	Kg	2.58E-5	1.12E-6	5.22E-5	7.91E-5	1.23E-7	1.13E-7	2.68E-7	0.00E+0	-5.21E-8
NHWD	Kg	1.12E-1	2.24E-2	1.93E-2	1.53E-1	5.34E-5	2.84E-3	7.16E-2	0.00E+0	-1.14E-3
RWD	Kg	4.15E-5	4.14E-6	8.77E-6	5.44E-5	3.13E-7	2.94E-7	9.56E-7	0.00E+0	-1.31E-7

HWD=hazardous waste disposed | NHWD=non hazardous waste disposed | RWD=radioactive waste disposed

ENVIRONMENTAL INFORMATION DESCRIBING OUTPUT FLOWS

Abbr.	Unit	A1	A2	A3	A1-A3	C1	C2	C3	C4	D
CRU	Kg	0.00E+0	0.00E+0	3.12E-5	3.12E-5	0.00E+0	0.00E+0	0.00E+0	0.00E+0	0.00E+0
MFR	Kg	0.00E+0	0.00E+0	2.64E-4	2.64E-4	0.00E+0	0.00E+0	0.00E+0	0.00E+0	0.00E+0
MER	Kg	0.00E+0	0.00E+0	0.00E+0	0.00E+0	0.00E+0	0.00E+0	0.00E+0	0.00E+0	0.00E+0
EET	MJ	0.00E+0	0.00E+0	-2.81E-3	-2.81E-3	0.00E+0	0.00E+0	0.00E+0	0.00E+0	0.00E+0
EEE	MJ	0.00E+0	0.00E+0	-1.63E-3	-1.63E-3	0.00E+0	0.00E+0	0.00E+0	0.00E+0	0.00E+0

CRU=Components for re-use | MFR=Materials for recycling | MER=Materials for energy recovery | EET=Exported Energy Thermic | EEE=Exported Energy Electric

5 Results

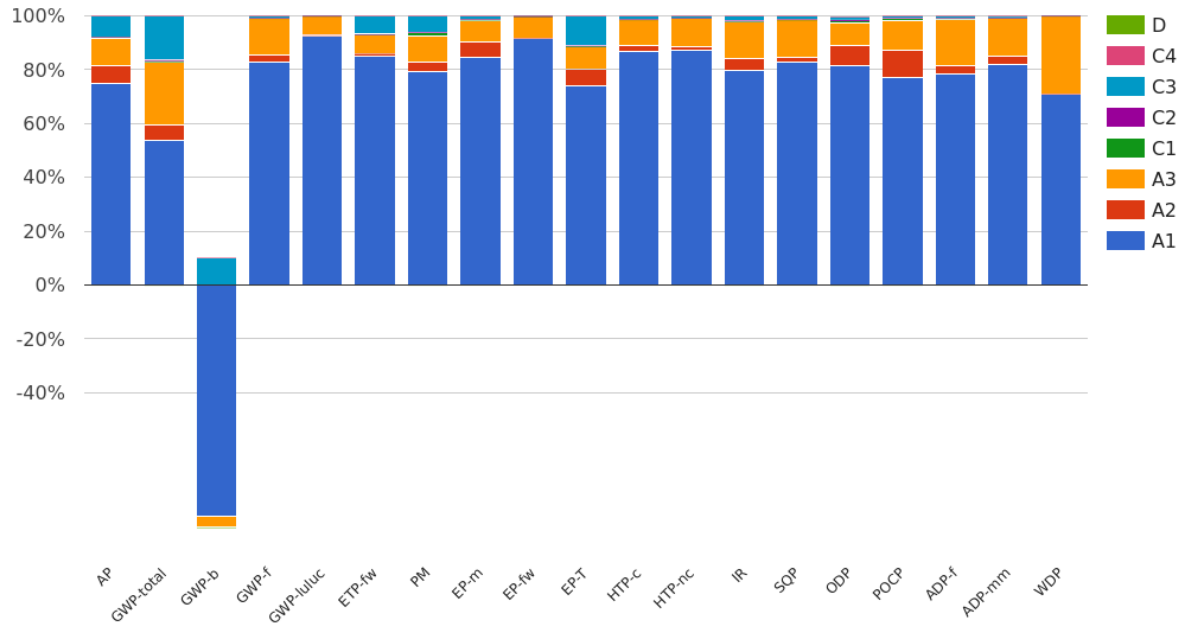
5.3 INFORMATION ON BIOGENIC CARBON CONTENT PER SQUARE METER

BIOGENIC CARBON CONTENT

The following Information describes the biogenic carbon content in (the main parts of) the product at the factory gate per square meter:

Biogenic carbon content	Amount	Unit
Biogenic carbon content in the product	0	kg C
Biogenic carbon content in accompanying packaging	0	kg C

6 Interpretation of results



For easier understanding, the results are presented graphically in order to be able to see correlations and connections between the data more clearly.

As can be seen in the graph, raw material provision (module A1) dominates in almost all environmental impact categories, often followed by production waste (A3). Module A1 has the highest influence on the total Global Warming Potential (GWP-total).

7 References

ISO 14040

ISO 14040:2006-10, Environmental management - Life cycle assessment - Principles and framework; EN ISO 14040:2006

ISO 14044

ISO 14044:2006-10, Environmental management - Life cycle assessment - Requirements and guidelines; EN ISO 14044:2006

ISO 14025

ISO 14025:2011-10: Environmental labels and declarations — Type III environmental declarations — Principles and procedures

EN 15804+A2

EN 15804+A2: 2019: Sustainability of construction works — Environmental Product Declarations — Core rules for the product category of construction products

EN ISO 9864

Geosynthetics — Test method for the determination of mass per unit area of geotextiles and geotextile-related products.

ISO 9863-1

Geosynthetics — Determination of thickness at specified pressures.

EN 13253:2016

Geotextilien und geotextilverwandte Produkte - Geforderte Eigenschaften für die Anwendung in Erosionsschutzanlagen (Küstenschutz, Deckwerksbau).

NMD EoL scenarios 2022

Forfaitaire waarden voor verwerking-scenario's einde leven behorende bij:
Bepalingsmethode Milieuprestatie Bouwwerken

PCR A

General Program Category Rules for Construction Products from the EPD program Kiwa-Ecobility Experts, 2022-02-14

PCR B

Product Category Rules (PCR) from the Kiwa-Ecobility Experts (Kiwa-EE) – Specific Product Category Rules: Geosynthetic products, 2023-07-21

8 Contact information

Publisher	Operator	Owner of declaration
 <p>Kiwa-Ecobility Experts Wattstraße 11-13 13355 Berlin, DE</p>	 <p>Kiwa-Ecobility Experts Wattstraße 11-13 13355 Berlin, DE</p>	 <p>Freudenberg Performance Materials B.V. Westervoortsedijk 73 6827 AV Arnhem, Netherlands, NL</p>
<p>E-mail: DE.Ecobility.Experts@kiwa.com</p> <p>Website: https://www.kiwa.com/de/en/themes/ecobility-experts/ecobility-experts-epd-program/</p>	<p>E-mail: DE.Ecobility.Experts@kiwa.com</p> <p>Website: https://www.kiwa.com/de/en/themes/ecobility-experts/ecobility-experts-epd-program/</p>	<p>E-mail: info@freudenberg-pm.com</p> <p>Website: https://www.freudenberg-pm.com/en</p>

Kiwa-Ecobility Experts is established member of the 