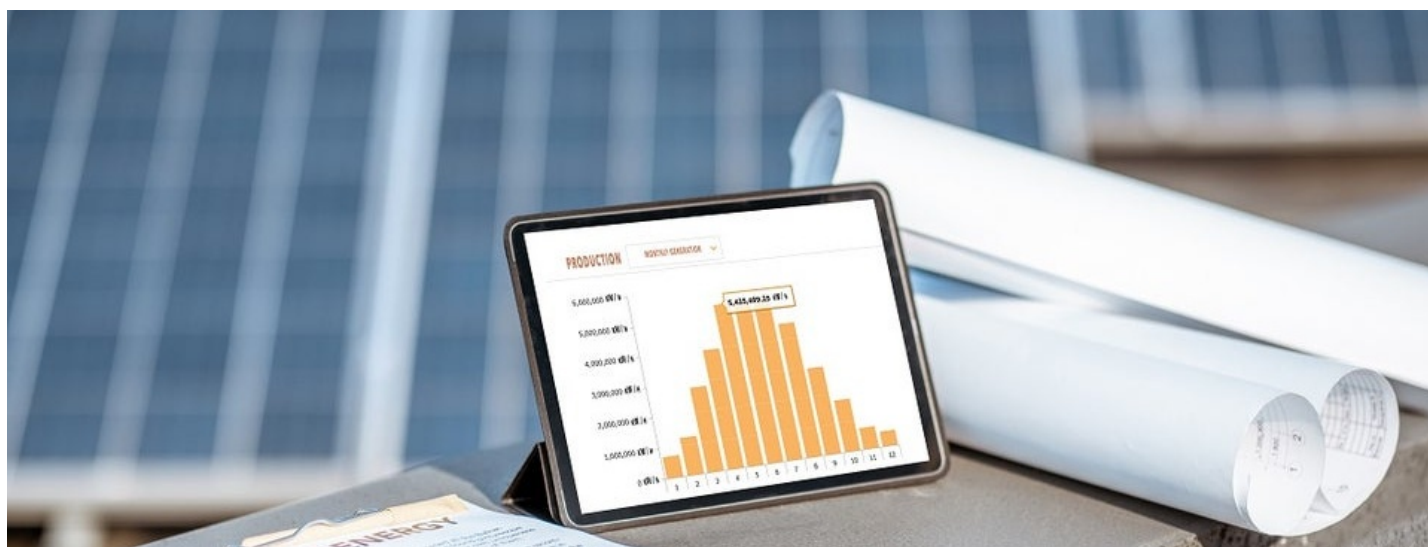


Asset Management



Kiwa, through the group member Kiwa Moroni, performs a complete plant management, assisting the investors in the technical and administrative management of the photovoltaic systems in order to increase their profitability and the value of their investment over time and ensuring the compliance with the guarantees provided by contracts and the current regulations requirements.

As a reliable and precise partner for bureaucratic formalities, Kiwa Moroni supports its clients through its impartial control over the work of the O&M. Moreover, Kiwa Moroni supports the Credit Institutions, who can be sure about the compliance with the parameters estimated during the business plan phase and therefore about the correct return of the loan disbursed. Kiwa Moroni also helps founders through the management of the photovoltaic systems in default, due for example to the bankruptcy of the SPV, of the O&M contractor or because of legal and administrative problems with the competent bodies.

All the Asset Management activities performed by Kiwa Moroni are listed below:

- Supervision of the activities performed by the Operation & Maintenance (O&M) operator
- Independent performance monitoring and reporting
- Management of relations and contracts with suppliers
- Management of relations with local authorities
- Management of relations with the electricity network operator
- Management of relations with the GSE
- Health & Safety
- Tax Assistance
- Administrative Assistance

Kiwa N.V.
Sir Winston Churchill-laan 273
2288 EA Rijswijk
P.O. Box 70
2280 AB Rijswijk
info@kiwa.nl